

Balsam and Haynes Mtns.

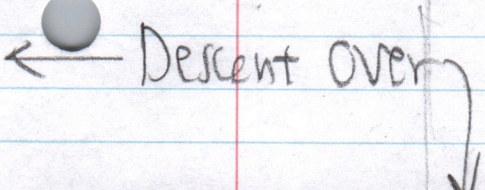
with Will Nixon
4/26/06

$R = 0.864$

Site	P	Δp	Δe	e _{calc}	e _{map}	Time	R
(A) Trail head	29.46	—	—	—	1980	9:25 AM	
(B) Minekollaw Confluence	29.36	0.00	0	—	2060		
(C) lv-trail, 1st larch	29.16	0.20	173	2233			
(D) top, 1st larch plant.	29.10	0.26	225	2285			
(E) above larch	29.00	0.36	311	2371			
(F) small rock pile	28.94	0.42	363	2423			
(G) fewer Ash & Oak	28.77	0.59	510	2570			
(H) bouldery, dense B	28.70	0.66	570	2630			
(I) terrace	28.60	0.76	657	2717			
(J) SUGS 24 to 30"	28.60	0.76	657	2712			
(K) 1 dead big torch	28.36	1.00	864	2924			
(L) bare steep pitch	28.22	1.14	985	3045			
(M) top ledge 1st	28.10	1.26	1089	3149			
(N) 1°; last oak	28.00	1.36	1175	3235	e-p #89		
(O) 2nd ledge top, 1st fir	27.92	1.44	1244	3304			
(P) SUGS, Fir ^{remains} reprob.	27.80	1.56	1348	3408			
(Q) Fir thicket	27.77	1.59	1374	3434			
(R) N Summit Balsam on trail	27.60	1.76	1520	—	3580	12:15 PM LUNCH 1:05	
(S) S Summit Balsam	27.51?	0.00			3600		
(T) Seneca Springs	27.68	0.20					
(U) 3500' sign	28.72? 28.02?	0.					
(V) 3 FIR, lowest	28.34?	below the fir rem. on boulder					
(W) Balsam-Haynes Col	28.17? 28.17?	These readings don't make sense!!			3020	2:03 PM	
(X) 1st firs on Haynes	27.86	0.16	139	3281			
(Y) Haynes Summit	27.70	AR. —	—	—	3420	2:40 PM	
" "	27.64	LV. —	—	—	3420	3:20 PM	

$$\frac{3580 - 2060}{29.36 - 27.60} = \frac{1520'}{1.76"} = 0.864$$

COL pressure is an error.
Use mean R of 0.864 to 0.872/2
= 0.868 to est. mate



Haynes Descent

$R = 0.872$

Site	P	Δp	Δe	R calc	e map	time	R
(P) Haynes Summit	27.64	1.56	—	—	3420	3:20 PM	
(N) highest fir	27.83	1.37	1195	3255			
(AA) steep, SUG	27.90	1.30	1134	3194			
(BA) brook goes ^{grand} under	28.07	1.13	985	3045			
(BB) ravine top	28.20	1.00	872	2932			
(CB) mod-step	28.36	0.84	732	2792			
(EE) less steep ASH	28.46	0.74	645	2705			
(FF) OST. KEM grave to E	28.56	0.64	558	2618			
(GG) KEM grave	28.65	0.55	480	2540			
(HH) KEM grave	28.80	0.40	349	2409			
(II) base of steep	28.95	0.25	218	2278			
(JJ) on trail	28.95	0.25	218	2278	2320	4:45 PM	
(CC) Eur. larch	29.00	0.20	174	2234			
(B) Mine Hollow Confluence	29.20	0.00	—	—	2060		
(A) Trailhead	29.29				1980	5:25 PM	

$$\frac{3420 - 2060}{29.20 - 27.64} = 1360'$$

$$\frac{1360'}{1.56} = 872'$$

0.872

Pressure fell from 29.46 to 29.29 = 0.17" in 8 hours, equivalent to Selev. of 148 feet!!

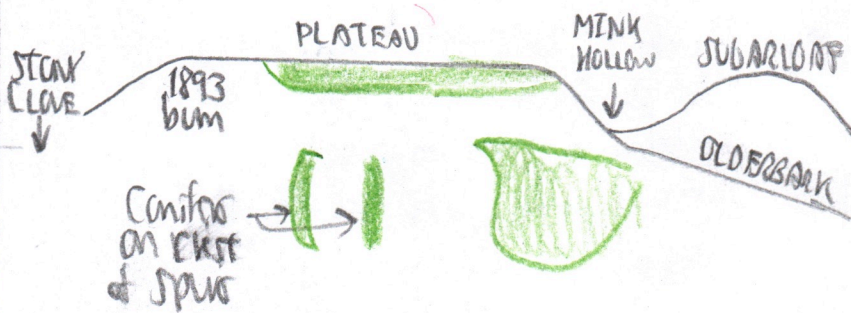
Are Rs low with ↓ pressure?

Vegetation Notes

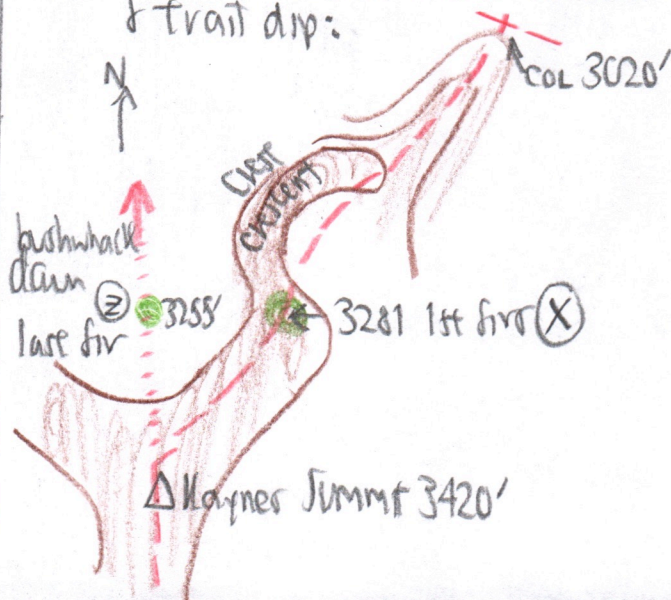
- (B) 1st & only ERY in flower this season! Dic. can. in flower. 2060' Dic-cuc in fl. bud. Claytonia & Vrot common in fl.
- (C) Lv-trail at 1st Larch 2233'
- (D) Eur. larch plantation does NOT climb high up hillside at all. 2285' Top at 2285 ft., only 52 ft above trail
- (E) OAK ASH, Bigtooth 2391' Dent-di. in fl., VROT & Claytonia in fl.
- (F) Small rock pile could have been a pasture or lot corner? Probably heather 2423' ASH & OAK abun.
- (G) fewer ASH & OAK - No trees > 100y 2570'
- (H) Big balders more common. Beech sprouts mod-dense 2630'
- (I) 2717' Terrace. Many oak & ash.
- (J) 2717' SUBs to 30', several old
- (K) 2924' 1 dead Bigtooth. Thick B. 10SP.
- (L) 3045' Base of steep west pitch with ledge on top. Lookout at over the Balsam-Waynes col to south OAK abundant. B thickets crown 60'. No roads visible since trail.
- (M) Top of Ledge. (Still a few oak) 3149 Canopy reduces to 40'
- (N) 3235 last oak. Few sug. e.p. BC dom to 40%. KB subdom. B mostly sprout. 1st growth e.p.# 89
- (O) 3304 2nd ledge top. 1st two fir to N

- (P) 3408 1st SORBUS. FIR repro Common Under KB dom.
- (Q) 3434. More SORBUS. Abun RA & VA Several ledges with thick young fir
- (R) Enter trail on N end of Summit.

Lookout Lunch Ledge: 540F
 2 photos looking E ^{show} skid roads on Garretion Ridge, E white pine in Escarp Valley, & Conifer on Plateau Mtn. Spurs.



- (S) Balsam S Summit 3600'
- (T) Senecio Sprs.
- (U) 3500' sign
- (V) 3 more scot fir below balders with dense fir saplings.
- (W) Col Balsam-Waynes
- (X) 1st 2 firs just above crescent crest & trail dip:



210-21 Haynes Summit (V) 5800' Small brook from SSE.
BE dom to 35' tall.
3420' KB 2nd m abun, then
B, RM, fir leare. 2 photos.
Then film roll change
Several more fir tempo. photos

(2) Last fir on descent 3255'
about 6' tall. KB bouldery
Last ledge ± 3400'

(AA) 3194' SUB - All seems fewer
boulders

(BB) Brooklet disappears for 2nd
time underground. Begin steep
bouldery down, no ledges, V.
MM thicket. SUBS scot to 24" ±
mixed with KB

(CC) 2932' Top of 20' deep ravine -
no ledge - Polystichum braunii
STEEP

(DD) 2792' Steepness moderates at
stone break. Above: KB - Coniur -
SAMB - MM scrub, bouldery
Below: SUB dom,
more trees < 20"

(EE) 2705'. 1 Big ASH down.
SUB ± 24 to 30" ±

(FF) 2618' OST. Hem grave visible
to NE below, at eye level & climbing
maybe to 100' above.
MK tripped & fell here

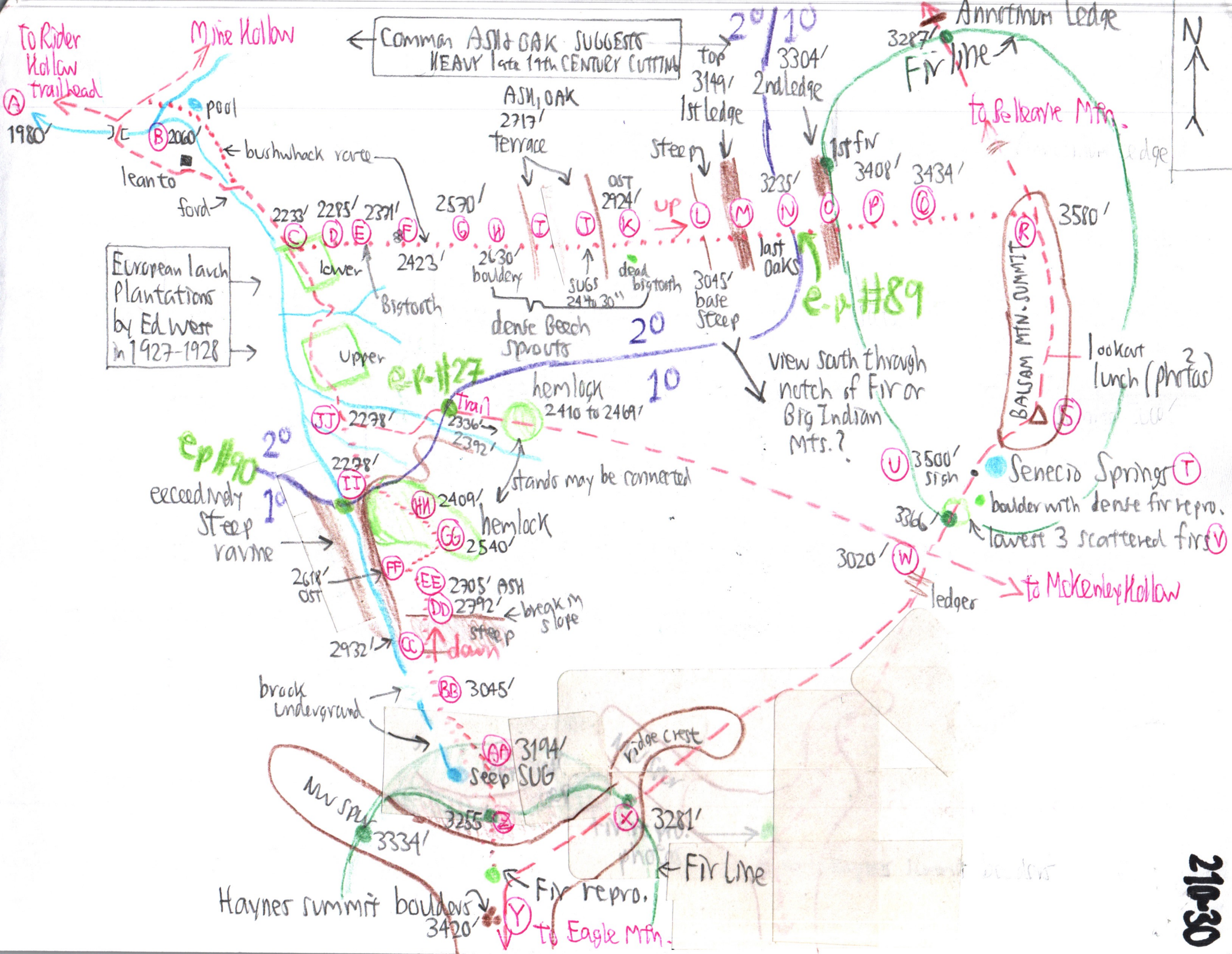
(GG) 2540. In HEM grave. 24" to 30" ±
No bark roads

(HH) 2409 HEM 33" ±. Scot above the
ravine, but dom IN ravine.
No bark roads

(II) 2278'. Base of steep hemlock
slope. SUB - 4 ASH, no trees
e.p. 90 > 20". First growth ends at
base of steep slope on descent

(JJ) 2278' ON TRAIL

(C) Fry m fl., 1st seen this season,
2060' near pool.



Fir Line, Lower Limit Elevations, on Balsam & Haynes Mts.

210-31

Point	Date	Elev.	Field notes page
○	This hike	3304'	
✓	10/8/1990	3366' *	210-6
✗	This hike	3281'	
Σ	This hike	3255'	
U	6/10/1997	3334'	221-9
P	10/8/1990	3287'	210-6

Barometer misread on 4/26/06. Use data of

← Annotinum ledge, above

3304.5
 6) 19827
 18
 18

Σ 19827'
 n = 6
 x̄ 3305'

* 3340' transect #13 of 1970 was just below the fir line

Max. Difference in elev. between lowest and highest level of fir line:

3366' - 3281' = only 85'!

○	9/18/06	3381'	210-37